

Fig. S1 Gene ontology (GO) enrichment analysis results. (a) Upregulated gene list. (b) Downregulated gene list. Here, p.adjust means *P*-value adjusted by the Benjamini-Hochberg method.

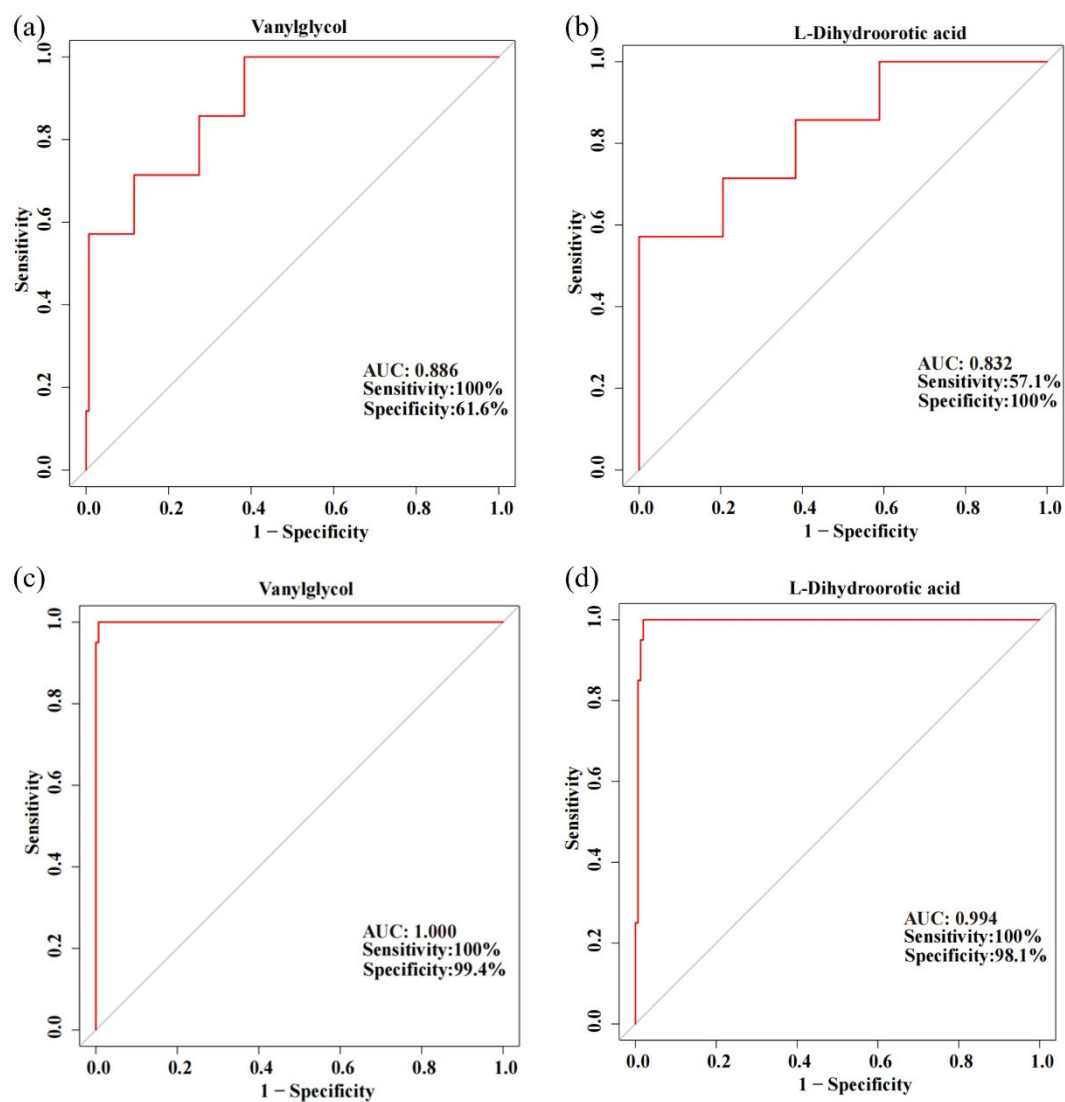


Fig. S2 Receiver operating characteristic (ROC) analysis for a single metabolite. (a) ROC curve for vanylglycol in the discovery set. (b) ROC curve for L-dihydroorotic acid in discovery set. (c) ROC curve for vanylglycol in the validation set. (d) ROC curve for L-dihydroorotic acid in the validation set.